



MID-PARK

METAL FORMING

ABOUT US

Mid-Park, Inc. is a family-owned manufacturing company founded in 1971. For almost 50 years, Mid-Park has continued to provide customers with quality products and dependable service nationwide. With two distinct business units in three locations, the Mid-Park family has grown to include two branches: Mid-Park Metal Forming and Mid-Park Highway.

Mid-Park Metal Forming is the largest manufacturer and distributor of farm gate hardware in the United States. In addition, Mid-Park Metal Forming provides contract manufacturing to include metal stamping, roll forming, and precision CNC machining.

Originally serving Central Kentucky, Mid-Park now routinely conducts business all throughout the United States and continues to expand into both national and international markets.



MID-PARK



MID-PARK

1971

Rough River Metal Products was established by Nelson Bernard in Hardin Springs, Kentucky.



1975

Rough River Metal Products begins manufacturing farm gate hardware



1976

Alan Bernard, Nelson's son, purchased half of Rough River Metal Products.



1977

Alan and Nelson purchased three acres bordering the Industrial Park located in Leitchfield, Kentucky and built a 3,000 square foot manufacturing facility and changed the name to Mid-Park.



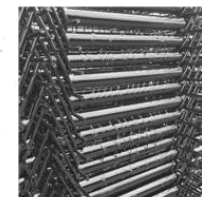
1984

Alan became the sole owner of Mid-Park with ambitious plans to add new product lines and increase the size of Mid-Park's operations.



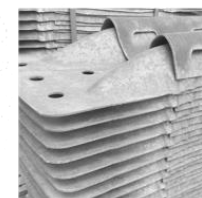
1986

Mid-Park expanded their product line to include concrete reinforcement.



1991

Mid-Park began manufacturing guardrail products.



1993

Mid-Park expanded guardrail products by purchasing a larger facility in Clarkson, Kentucky.



2003

Mid-Park expanded their sign structures product line to the national market.



2008

Mid-Park acquired Leitchfield Machining.



2015

Mid-Park purchased an automotive stamping company in Morgantown, Kentucky.



2017

Alan's son, Greg Bernard, purchased Mid-Park, Inc.



2020

Mid-Park purchased a 175,000 square foot facility located in Leitchfield, Kentucky to expand Roadway Construction Products (RCP).



2021

Mid-Park re-branded their two main divisions. Roadway Construction Products (RCP) became Mid-Park Highway and Service, Stamping & Threading (SST) became Mid-Park Metal Forming.



TABLE OF CONTENTS



MID-PARK

METAL FORMING

TABLE OF CONTENTS

GATE HARDWARE	11
MACHINE THREAD PIN	11
GATE HARDWARE	12
MACHINE THREAD PIN	12
GATE HARDWARE	13
LAG PINS.....	13
GATE HARDWARE	14
ROUND FEMALE ECONOMY BOLT-ON HINGES	14
GATE HARDWARE	15
ROUND FEMALE HEAVY DUTY BOLT-ON HINGES	15
GATE HARDWARE	16
ROUND FEMALE HEAVY DUTY BOLT-ON HINGES, CONT.	16
GATE WALKTHROUGH HARDWARE	17
ROUND FEMALE ECONOMY WELD-ON HINGES.....	17
GATE WALKTHROUGH HARDWARE	18
ROUND FEMALE HEAVY DUTY WELD-ON HINGES	18
GATE HARDWARE	19
SQUARE FEMALE ECONOMY BOLT-ON HINGES	19
GATE HARDWARE	20
SQUARE FEMALE HEAVY DUTY BOLT-ON HINGES	20
GATE HARDWARE	21
SQUARE FEMALE ECONOMY WELD-ON HINGES	21
GATE HARDWARE	22
SQUARE FEMALE HEAVY DUTY WELD-ON HINGES.....	22
GATE HARDWARE	23
ROUND MALE ECONOMY BOLT-ON HINGES	23
GATE HARDWARE	24
ROUND MALE ECONOMY WELD-ON HINGES	24
GATE HARDWARE	25
ROUND MALE HEAVY DUTY WELD-ON HINGES.....	25
GATE HARDWARE	26
SQUARE MALE ECONOMY WELD-ON HINGES.....	26

GATE HARDWARE.....	26
SQUARE MALE HEAVY DUTY WELD-ON HINGES.....	26
GATE HARDWARE.....	27
CHAIN LATCHES	27
GATE HARDWARE.....	28
CHAIN.....	28
CORRAL HARDWARE	30
CORRAL HARDWARE	32
HINGES	32
<i>Square</i>	32
<i>Round</i>	32
CHICKEN PANEL HARDWARE.....	33
OLD STYLE CORRAL	33
CORRAL HARDWARE	33
V CORRAL HINGES	33
CORRAL HARDWARE	34
DUAL STAMP	34
CORRAL HARDWARE	35
FISH HOOK	35
CORRAL HARDWARE	36
P HOOK	36
WIDE BEND Z-BRACES.....	38
Z-BRACES	39
PLAIN FINISH Z-BRACES	40
GALVANIZED Z-BRACES.....	41
HEMMED HAT BRACES	42
ROUND BALE FEEDER PARTS	44
FLAT BAR	44
ROUND BALE FEEDER PARTS	45
HAY FEEDER BRACKET.....	45
ROUND BALE FEEDER PARTS	46
HAY SAVER BAND	46
MISCELLANEOUS HARDWARE	48
CONNECTING BAND.....	48
MISCELLANEOUS HARDWARE	49

EYELET HINGES	49
U-CONNECTOR.....	49
U-ROD	49
MISCELLANEOUS HARDWARE	50
V-ROD.....	50
CONTINUOUS FENCING	51
MOUNTING CLAMP	51
2-WAY LOCKABLE SLAM LATCH	52
SPRING LATCH ASSEMBLY	52
SPRING-LOADED PLUNGER	52
FRAME RECEIVER	53
SPRING-LOADED SLAM LATCH	53
COLLARED HINGE	54
2-PIECE HINGE.....	54
BUNK LINER	55
C-BRACKET	56
L-BRACKET	56
ROLLER CARRIER	56
SADDLE CLAMP	57
FASTENERS.....	58
CARRIAGE BOLT	58
HEX BOLT.....	58
FLANGE NUT.....	58
FASTENERS.....	59
HEX NUT.....	59
JAM NUT.....	59
WASHER	59
HIGH WING NUT	59
SALES TEA	60

All Mid-Park Metal Forming products are zinc-plated after production and welding ensuring that there are no exposed slit edges to rust over time.



Mid-Park Metal Forming carries many different sizes of hinges to accommodate our customer's needs. We also have the capability of creating specialized orders or sizing upon request.



GATE HARDWARE



MID-PARK

METAL FORMING

GATE HARDWARE

MACHINE THREAD PIN

PART NUMBER	DIAMETER	LENGTH	PINTLE	THREAD	W/ 2 NUTS, 2 WASHERS	PACKAGE QUANTITY (BAG/DRUM)	FINISH
F20475PN ^C	5/8	10"	2"	9"	X	25/500	PLAIN FINISH
F20490PN ^B	5/8	13"	2"	12"		25/500	
F20495PN ^A	5/8	13"	2"	12"	X	25/500	
F20505PN ^C	5/8	15"	2"	14"	X	25/250	
F20501PN ^C	5/8	18"	2"	17"		25/250	
F20510PN ^C	3/4	10"	2"	9"		25/450	
F20530PN ^A	3/4	12"	2"	11"		25/450	
F20535PN ^A	3/4	12"	2"	11"	X	25/350	
F20560PN ^A	3/4	18"	2"	17"		25/250	
F20565PN ^A	3/4	18"	2"	17"	X	25/200	
F20562PN ^C	3/4	24"	2"	23"		25/BAG	



- A:** In-Stock Item. Typically product ships next day
- B:** Product may require short lead time. Typically product ships within 3-5 business days
- C:** Product not kept in stock. Typically Product requires longer lead time before shipping

Assembled Pin & Hinge

Part Number	Package Quantity
F20535PN- 335 PIM	500/Box
F20495PN- 92 PIM	500/Box



Pin w/ Stabilizer Brace

Part Number	Package Quantity
F20535PN- 120 PIM	500/Box
F20495PN- 120 PIM	500/Box



GATE HARDWARE
MACHINE THREAD PIN

PART NUMBER	DIAMETER	LENGTH	PINTLE	THREAD	W/ 2 NUTS, 2 WASHERS	IMPORT	PACKAGE QUANTITY (BAG/DRUM)	FINISH
F20455PN-PC	5/8	6"	2"	5"	X		25/1000	ZINC PLATED
F20460PN-PC	5/8	8"	2"	7"			25/1000	
F20465PN-PC	5/8	8"	2"	7"	X		25/750	
F20490PN-PA	5/8	13"	2"	12"			25/500	
F20490PN-PIMA	5/8	13"	2"	12"		X	50/2400	
F20495PN-PA	5/8	13"	2"	12"	X		25/500	
F20495PN-PIMA	5/8	13"	2"	12"	X	X	50/2400	
F20501PN-PA	5/8	18"	2"	17"			25/250	
F20506PN-PA	5/8	18"	2"	17"	X		25/250	
F20507PN-PC	3/4	8"	2"	7"			25/750	
F20530PN-PA	3/4	12"	2"	11"			25/450	
F20530PN-PIMA	3/4	12"	2"	11"		X	25/1800	
F20535PN-PA	3/4	12"	2"	11"	X		25/350	
F20535PN-PIMA	3/4	12"	2"	11"	X	X	25/1800	
F20541PN-PC	3/4	13"	2 3/4"	12"			25/350	
F20560PN-PC	3/4	18"	2"	17"			25/250	
F20565PN-PA	3/4	18"	2"	17"	X		25/200	
F20530PN-GC	3/4	12"	2"	11"			25/450	
F20535PN-GIMA	3/4	12"	2"	11"	X	X	25/1800	

A: In-Stock Item. Typically product ships next day

B: Product may require short lead time. Typically product ships within 3-5 business days

C: Product not kept in stock. Typically Product requires longer lead time before shipping



GATE HARDWARE

LAG PINS

PART NUMBER	DIAMETER	LENGTH	PINTLE	IMPORT	PACKAGE QUANTITY (BAG/DRUM)	FINISH
F20140PN ^B	5/8	6"	2"		50/1250	PLAIN FINISH
F20170PN ^A	3/4	6"	2"		50/1000	
F20180PN ^B	3/4	8"	2"		50/750	
F20040PN-PIM ^A	5/8	6"	1 1/2"	X	100/5400	ZINC PLATED
F20050PN-PIM ^A	5/8	8"	1 1/2"	X	50/4000	
F20140PN-P ^A	5/8	6"	2"		50/1250	
F20140PN-PIM ^A	5/8	6"	2"	X	100/5400	
F20170PN-P ^A	3/4	6"	2"		50/1000	
F20180PN-P ^A	3/4	8"	2"		50/750	

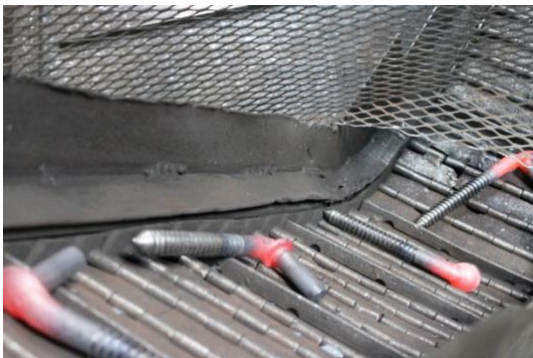


A: In-Stock Item. Typically product ships next day

B: Product may require short lead time. Typically product ships within 3-5 business days

C: Product not kept in stock. Typically Product requires longer lead time before shipping

Our domestically produced pins are manufactured from full 5/8" or 3/4" rod with heavier necks and forged heads, along with non-tapered pintles. Pins with nuts and washers have cut threads, while our lag thread pins have oversize rolled threads. This ensures that our domestic pins are the strongest and longest lasting pins on the market.



GATE HARDWARE

ROUND FEMALE ECONOMY BOLT-ON HINGES

PART NUMBER	Pintle	Tube	Gauge	Material Width	Welded	Spread	PACKAGE QUANTITY (BAG/DRUM)	FINISH
F20080RH ^C	5/8	1 5/8	9	1	X		100/1250	PLAIN FINISH
F20071RH ^A	5/8	1 5/8	9	1		X	100/1250	
F20090RH ^A	5/8	1 3/4	9	1	X		100/1250	
F20040RH-P ^C	5/8	1 3/8	9	1	X		100/1500	ZINC PLATED
F20080RH-P ^A	5/8	1 5/8	9	1	X		100/1250	
F20071RH-P ^A	5/8	1 5/8	9	1		X	100/1250	
F20090RH-P ^A	5/8	1 3/4	9	1	X		100/1250	

A: In-Stock Item. Typically product ships next day

B: Product may require short lead time. Typically product ships within 3-5 business days

C: Product not kept in stock. Typically Product requires longer lead time before shipping



GATE HARDWARE
ROUND FEMALE HEAVY DUTY BOLT-ON HINGES

PART NUMBER	Pintle	Tube	Gauge	Material Width	Welded	Spread	Self-Tap Screw Hole	PACKAGE QUANTITY (BAG/DRUM)	FINISH
F20225RH ^C	5/8	1 5/8	7	1-1/2	X			50/700	PLAIN FINISH
F20237RH ^A	5/8	1 3/4	11	1-1/2	X			50/700	
F20235RH ^A	5/8	1 3/4	7	1-1/2	X			50/700	
F20295RH ^C	3/4	1 1/2	7	1-1/2	X			50/700	
F20305RH ^B	3/4	1 1/2	7	1-1/2		X	X	50/700	
F20310RH ^C	3/4	1 5/8	7	1-1/2				50/700	
F20317RH ^A	3/4	1 5/8	7	1-1/2	X		X	50/700	
F20320RH ^C	3/4	1 3/4	7	1-1/2				50/700	
F20325RH ^A	3/4	1 3/4	7	1-1/2	X			50/700	
F20326RH ^A	3/4	1 3/4	7	1-1/2		X	X	50/700	
F20330RH ^C	3/4	2	7	1-1/2				50/700	
F20335RH ^A	3/4	2	7	1-1/2	X			50/700	
F20336RH ^A	3/4	2	7	1-1/2	X	X		50/700	
F20338RH ^C	3/4	2	7	1-1/2	X		X	50/700	
F20340RH ^A	3/4	2	7	1-1/2	X	X	X	50/700	

A: In-Stock Item. Typically product ships next day

B: Product may require short lead time. Typically product ships within 3-5 business days

C: Product not kept in stock. Typically Product requires longer lead time before shipping



GATE HARDWARE
ROUND FEMALE HEAVY DUTY BOLT-ON HINGES, CONT.

PART NUMBER	Pintle	Tube	Gage	Material Width	Welded	Spread	Self-Tap Screw Hole	PACKAGE QUANTITY (BAG/DRUM)	FINISH
F20326RH-G ^A	3/4	1 3/4	7	1-1/2	X	X	X	50/700	GALVANIZED
F20340RH-G ^A	3/4	2	7	1-1/2	X	X	X	50/700	
F20225RH-P ^C	5/8	1 5/8	7	1-1/2	X			50/700	
F20237RH-P ^A	5/8	1 3/4	11	1-1/2	X			50/700	ZINC PLATED
F20235RH-P ^A	5/8	1 3/4	7	1-1/2	X			50/700	
F20295RH-P ^A	3/4	1 1/2	7	1-1/2	X			50/700	
F20317RH-P ^A	3/4	1 5/8	7	1-1/2	X		X	50/700	
F20325RH-P ^A	3/4	1 3/4	7	1-1/2	X			50/700	
F20335RH-P ^A	3/4	2	7	1-1/2	X			50/700	
F20336RH-P ^A	3/4	2	7	1-1/2	X	X		50/700	
F20338RH-P ^A	3/4	2	7	1-1/2	X		X	50/700	

A: In-Stock Item. Typically product ships next day

B: Product may require short lead time. Typically product ships within 3-5 business days

C: Product not kept in stock. Typically Product requires longer lead time before shipping



GATE WALKTHROUGH HARDWARE
ROUND FEMALE ECONOMY WELD-ON HINGES

PART NUMBER	PINTLE	TUBE	GAUGE	MATERIAL WIDTH	PACKAGE QUANTITY (BAG/DRUM)	FINISH
F20480RH ^A	5/8	1 3/4	9	1	100/3000	PLAIN FINISH
F20460RH-P ^C	5/8	1 1/4	9	1	100/3000	ZINC PLATED
F20475RH-P ^A	5/8	1 5/8	9	1	100/3000	
F20480RH-P ^A	5/8	1 3/4	9	1	100/3000	

A: In-Stock Item. Typically product ships next day

B: Product may require short lead time. Typically product ships within 3-5 business days

C: Product not kept in stock. Typically Product requires longer lead time before shipping



GATE WALKTHROUGH HARDWARE
ROUND FEMALE HEAVY DUTY WELD-ON HINGES

PART NUMBER	PINTLE	TUBE	GAUGE	MATERIAL WIDTH	WELDED	PACKAGE QUANTITY (BAG/DRUM)	FINISH
F20565RH ^C	5/8	1 5/8	7	1 1/2		50/1500	PLAIN FINISH
F20570RH ^A	5/8	1 3/4	7	1 1/2		50/1500	
F20571RH ^A	5/8	1 3/4	11	1 1/2		50/1500	
F20605RH ^B	3/4	1 5/8	7	1 1/2		50/1500	
F20610RH ^A	3/4	1 3/4	7	1 1/2		50/1500	
F20611RH ^C	3/4	1 3/4	11	1 1/2		50/1500	
F20612RH ^A	3/4	1 3/4	7	1 1/2	X	50/1500	
F20615RH ^A	3/4	2	7	1 1/2		50/1500	
F20630RH ^C	3/4	2 3/8	7	1 1/2		50/1000	
F20565RH-PC ^C	5/8	1 5/8	7	1 1/2		50/1500	ZINC PLATED
F20570RH-PA ^A	5/8	1 3/4	7	1 1/2		50/1500	
F20571RH-PA ^A	5/8	1 3/4	11	1 1/2		50/1500	
F20600RH-PC ^C	3/4	1 1/2	7	1 1/2		50/1500	
F20610RH-PA ^A	3/4	1 3/4	7	1 1/2		50/1500	
F20611RH-PC ^C	3/4	1 3/4	11	1 1/2		50/1500	
F20612RH-PA ^A	3/4	1 3/4	7	1 1/2	X	50/1500	
F20615RH-PA ^A	3/4	2	7	1 1/2		50/1500	
F20616RH-PC ^C	3/4	2	7	1 1/2		50/1500	

A: In-Stock Item. Typically product ships next day

B: Product may require short lead time. Typically product ships within 3-5 business days

C: Product not kept in stock. Typically Product requires longer lead time before shipping



GATE HARDWARE
SQUARE FEMALE ECONOMY BOLT-ON HINGES

PART NUMBER	PINTLE	TUBE	GAUGE	MATERIAL WIDTH	PACKAGE QUANTITY (BAG/DRUM)	FINISH
F20020SH ^B	5/8	1 3/8	9	1	100/1250	PLAIN FINISH
F20020SH-P ^A	5/8	1 3/8	9	1	100/1250	ZINC PLATED

A: In-Stock Item. Typically product ships next day

B: Product may require short lead time. Typically product ships within 3-5 business days

C: Product not kept in stock. Typically Product requires longer lead time before shipping



GATE HARDWARE
SQUARE FEMALE HEAVY DUTY BOLT-ON HINGES

PART NUMBER	Pintle	Tube	Gauge	Material Width	Welded	PACKAGE QUANTITY (BAG/DRUM)	FINISH
F20135SH ^A	3/4	1 1/2	7	1-1/2	X	50/700	Plain Finish
F20335SH ^B	3/4	2	7	1-1/2	X	50/700	
F20125SH-P ^C	3/4	1 3/8	7	1-1/2		50/700	Zinc Plated
F20135SH-P ^A	3/4	1 1/2	7	1-1/2		50/700	
F20335SH-P ^A	3/4	2	7	1-1/2	X	50/700	

A: In-Stock Item. Typically product ships next day

B: Product may require short lead time. Typically product ships within 3-5 business days

C: Product not kept in stock. Typically Product requires longer lead time before shipping



GATE HARDWARE
SQUARE FEMALE ECONOMY WELD-ON HINGES

PART NUMBER	PINTLE	TUBE	GAUGE	MATERIAL WIDTH	PACKAGE QUANTITY (BAG/DRUM)	FINISH
F20160SH ^B	5/8	1 3/8	9	1	100/3000	PLAIN FINISH
F20160SH-P ^C	5/8	1 3/8	9	1	100/3000	ZINC PLATED

A: In-Stock Item. Typically product ships next day

B: Product may require short lead time. Typically product ships within 3-5 business days

C: Product not kept in stock. Typically Product requires longer lead time before shipping



GATE HARDWARE
SQUARE FEMALE HEAVY DUTY WELD-ON HINGES

PART NUMBER	PINTLE	TUBE	GAUGE	MATERIAL WIDTH	PACKAGE QUANTITY (BAG/DRUM)	FINISH
F20210SH ^B	3/4	1 3/8	7	1 1/2	50/1500	PLAIN FINISH
F20215SH ^A	3/4	1 1/2	7	1 1/2	50/1500	
F20216SH ^A	3/4	2	7	1 1/2	50/1000	
F20210SH-P ^C	3/4	1 3/8	7	1 1/2	50/1500	
F20215SH-P ^A	3/4	1 1/2	7	1 1/2	50/1500	ZINC PLATED
F20216SH-P ^A	3/4	2	7	1 1/2	50/1000	

A: In-Stock Item. Typically product ships next day

B: Product may require short lead time. Typically product ships within 3-5 business days

C: Product not kept in stock. Typically Product requires longer lead time before shipping



GATE HARDWARE

ROUND MALE ECONOMY BOLT-ON HINGES

PART NUMBER	Pintle	Tube	Gauge	Material Width	PACKAGE QUANTITY (BAG/DRUM)	FINISH
F20175RH ^B	5/8	1 3/4	9	1	50/1000	PLAIN FINISH
F20155RH-P ^C	5/8	1 3/8	9	1	50/1000	ZINC PLATED
F20170RH-P ^C	5/8	1 3/4	9	1	50/1000	

A: In-Stock Item. Typically product ships next day

B: Product may require short lead time. Typically product ships within 3-5 business days

C: Product not kept in stock. Typically Product requires longer lead time before shipping



GATE HARDWARE
ROUND MALE ECONOMY WELD-ON HINGES

PART NUMBER	PINTLE	TUBE	GAUGE	MATERIAL WIDTH	PACKAGE QUANTITY (BAG/DRUM)	FINISH
F20530RH ^A	5/8	1 3/4	9	1	50/2000	PLAIN FINISH
F20530RH-P ^A	5/8	1 3/4	9	1	50/2000	ZINC PLATED

A: In-Stock Item. Typically product ships next day

B: Product may require short lead time. Typically product ships within 3-5 business days

C: Product not kept in stock. Typically Product requires longer lead time before shipping



Our male hinges feature full surface weld to increase durability and decrease the chance of the hinge to breakdown.

GATE HARDWARE
ROUND MALE HEAVY DUTY WELD-ON HINGES

PART NUMBER	PINTLE	TUBE	GAUGE	MATERIAL WIDTH	PACKAGE QUANTITY (BAG/DRUM)	FINISH
F20405RH ^C	3/4	1 1/2	7	1 1/2	50/1000	PLAIN FINISH
F20650RH ^A	5/8	1 3/4	7	1 1/2	50/1000	
F20651RH ^A	5/8	1 3/4	11	1 1/2	50/1000	
F20690RH ^A	3/4	1 3/4	7	1 1/2	50/1000	
F20695RH ^A	3/4	2	7	1 1/2	50/1000	
F20650RH-P ^C	5/8	1 3/4	7	1 1/2	50/1000	ZINC PLATED
F20690RH-P ^A	3/4	1 3/4	7	1 1/2	50/1000	
F20695RH-P ^A	3/4	2	7	1 1/2	50/1000	

A: In-Stock Item. Typically product ships next day

B: Product may require short lead time. Typically product ships within 3-5 business days

C: Product not kept in stock. Typically Product requires longer lead time before shipping



GATE HARDWARE

SQUARE MALE ECONOMY WELD-ON HINGES

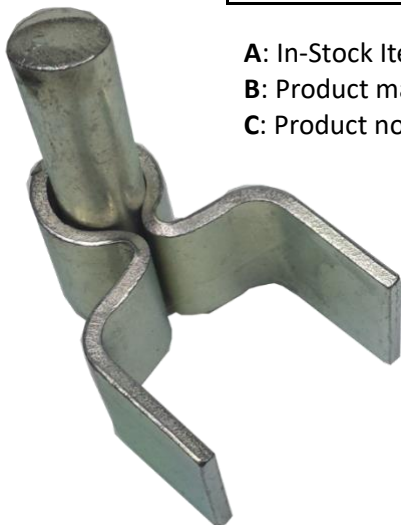
PART NUMBER	PINTLE	TUBE	GAUGE	MATERIAL WIDTH	PACKAGE QUANTITY (BAG/DRUM)	FINISH
F20175SH ^B	5/8	1 3/8	9	1	50/2000	PLAIN FINISH
F20175SH-P ^C	5/8	1 3/8	9	1	50/2000	ZINC PLATED



GATE HARDWARE

SQUARE MALE HEAVY DUTY WELD-ON HINGES

PART NUMBER	PINTLE	TUBE	GAUGE	MATERIAL WIDTH	PACKAGE QUANTITY (BAG/DRUM)	FINISH
F20246SH-P ^A	3/4	2	7	1 1/2	50/500	ZINC PLATED



A: In-Stock Item. Typically product ships next day

B: Product may require short lead time. Typically product ships within 3-5 business days

C: Product not kept in stock. Typically Product requires longer lead time before shipping

GATE HARDWARE

CHAIN LATCHES

PART NUMBER	SIZE	PACKAGE QUANTITY (BAG/DRUM)	FINISH
F20070CL ^A	7GA X 2 3/4" TRIANGLE	100/5000	PLAIN FINISH
F20071CL ^A	10GA X 2 3/4" TRIANGLE	100/5000	
F20061CL ^A	7GA X 2" - HEAVY DUTY TRAPEZOID (3 HOLES)	50/4000	ZINC PLATED
F20070CL-P ^A	7GA X 2 3/4" TRIANGLE	100/5000	
F20071CL-P ^A	10GA X 2 3/4" TRIANGLE	100/5000	

- A:** In-Stock Item. Typically product ships next day
- B:** Product may require short lead time. Typically product ships within 3-5 business days
- C:** Product not kept in stock. Typically Product requires longer lead time before shipping



GATE HARDWARE

CHAIN

A: In-Stock Item. Typically product ships next day
B: Product may require short lead time. Typically product ships within 3-5 business days
C: Product not kept in stock. Typically Product requires longer lead time before shipping

PART NUMBER	DESCRIPTION	PACKAGE QUANTITY (BAG/DRUM)
F20001LC-PA	1/0 DOUBLE LOOP CHAIN W/SNAP 19" LENGTH	200/BOX 9600/PALLET
F20002LC-GA	1/0 STRAIGHT LINK - 3/16" 30" LENGTH GALVANIZED	20/1800
F20002LC-PA	1/0 STRAIGHT LINK 3/16" 30" LENGTH ZINC PLATED	20/2000
F20003LC-GA	3/16" PROOF COIL GALVANIZED 36" LENGTH	20/1100
F20003LC-PA	3/16" PROOF COIL ZINC PLATED 36" LENGTH	20/1200
F20007LC-PA	1/0 STRAIGHT LINK - 3/16" 36" LENGTH ZINC PLATED	10/1250
F20010LC-PA	1/0 STRAIGHT LINK W/1/4" CARABINER HOOK 33" LENGTH ZINC PLATED	20/1500
F20000LC-PHW ^C	2/0 STRAIGHT LINK MACHINE CHAIN 28" LENGTH ZINC PLATED	SPECIAL ORDER



STRAIGHT LINK CHAIN W/CARABINER HOOK ZINC PLATED



DOUBLE LOOP CHAIN W/SNAP



PROOF COIL ZINC PLATED

CORRAL HARDWARE



MID-PARK
METAL FORMING

CORRAL HARDWARE



WORKS WITH 1/2", 9/16" AND 5/8" ROD DIAMETERS





CORRAL HARDWARE

HINGES

SQUARE

PART NUMBER	GAUGE	WIDTH	TUBE	PACKAGE QUANTITY (BAG/DRUM)	FINISH
F20010CH ^B	9	1	1 3/8	100/2000	PLAIN FINISH
F20075CHS ^B	7	1-1/2	2	50/1000	
F20075CHS-P ^A	7	1-1/2	2	50/100	ZINC PLATED

ROUND

PART NUMBER	GAUGE	WIDTH	TUBE	PACKAGE QUANTITY (BAG/DRUM)	FINISH
F20050CH ^A	9	1	1 3/4	100/2000	PLAIN FINISH
F20051CH ^A	11	1	1 3/4	100/2000	
F20070CH ^A	7	1 1/2	1 3/4	50/1000	
F20071CH ^A	11	1 1/2	1 3/4	50/1000	
F20075CH ^A	7	1 1/2	2	50/1000	
F20076CH ^C	7	1-1/2	2 3/8	50/1000	
F20039CH-P ^C	9	1	1 1/4	100/2000	ZINC PLATED
F20050CH-P ^A	9	1	1 3/4	100/2000	
F20051CH-P ^A	11	1	1 3/4	100/2000	
F20070CH-P ^A	7	1-1/2	1 3/4	50/1000	
F20071CH-P ^A	11	1-1/2	1 3/4	50/1000	
F20075CH-P ^A	7	1-1/2	2	50/1000	
F20076CH-P ^C	7	1-1/2	2 3/8	50/1000	

A: In-Stock Item. Typically product ships next day

B: Product may require short lead time. Typically product ships within 3-5 business days

C: Product not kept in stock. Typically Product requires longer lead time before shipping

CHICKEN PANEL HARDWARE

OLD STYLE CORRAL

PART NUMBER	SIZE	PACKAGE QUANTITY (BAG/DRUM)	FINISH
F20035CH ^A	9 GA X ROUND	100/3000	PLAIN FINISH
F20115CH ^A	9 GA X 7" PIN (MALE)	50/1000	
F20035CH-P ^A	9 GA X ROUND	100/3000	ZINC PLATED
F20115CH-P ^A	9 GA X 7" PIN (MALE)	50/1000	



CORRAL HARDWARE

V CORRAL HINGES

PART NUMBER	GAUGE	SIZE	PACKAGE QUANTITY (BAG/DRUM)	FINISH
F20079CH ^B	7	1	100/2500	PLAIN FINISH
F20095CH ^B	7	1 3/4	100/2000	
F20088MI ^B	10	1 1/2	100/4000	
F20079CH-P ^A	7	1	100/2500	ZINC PLATED
F20080CH-P ^C	7	1 1/8	100/2000	
F20090CH-P ^C	7	1 1/2	100/2000	
F20095CH-P ^C	7	1 3/4	100/2000	
F20088MI-P ^A	10	1 1/2	100/4000	



A: In-Stock Item. Typically product ships next day

B: Product may require short lead time. Typically product ships within 3-5 business days

C: Product not kept in stock. Typically Product requires longer lead time before shipping

CORRAL HARDWARE
DUAL STAMP

PART NUMBER	SIZE	PACKAGE QUANTITY (BAG/DRUM)	FINISH
F20137CH ^C	9/16 X 9" WITH TWO 5/8 FLAT WASHERS	50/1000	PLAIN FINISH
F20142CH ^A	9/16 X 11" WITH TWO 5/8 FLAT WASHERS	50/700	
F20137CH-PC ^C	9/16 X 9" DOMESTIC WITH TWO 5/8 FLAT WASHERS	50/1000	ZINC PLATED
F20142CH-PC ^C	9/16 X 11" DOMESTIC WITH TWO 5/8 FLAT WASHERS	50/700	
F20137CH-PIM ^A	9/16 X 9" IMPORT WITH TWO 5/8 FLAT WASHERS	50/BAG 3000/PALLET	
F20142CH-PIM ^A	9/16 X 11" IMPORT WITH TWO 5/8 FLAT WASHERS	50/BAG 3500/PALLET	

A: In-Stock Item. Typically product ships next day

B: Product may require short lead time. Typically product ships within 3-5 business days

C: Product not kept in stock. Typically Product requires longer lead time before shipping



CORRAL HARDWARE

FISH HOOK

PART NUMBER	LENGTH	WIDE BEND	STAMPED	EX	PACKAGE QUANTITY (BAG/DRUM)	FINISH
F20120CH ^A	8 1/4				50/1000	PLAIN FINISH
F20130CH ^C	8 1/4	X			50/1000	
F20135CH ^C	8 1/4		X		50/1000	
F20140CH ^C	10 1/4		X	2"	50/700	
F20146CH ^C	22 1/4		X	14"	500/DRUM	
F20120CH-P ^A	8 1/4				50/1000	ZINC PLATED
F20121CH-P ^C	12 1/8 WITH 15" CHAIN				50/1000	
F20130CH-P ^C	8 1/4	X			50/1000	
F20135CH-P ^C	8 1/4		X		50/1000	
F20140CH-P ^C	10 1/4		X	2"	50/700	
F20171CH-P ^C	1/2 X 8 1/4 OPPOSITE FORM		X		50/1000	
F20175CH-P ^C	1/2 X 10 1/4		X	2"	50/1000	

A: In-Stock Item. Typically product ships next day

B: Product may require short lead time. Typically product ships within 3-5 business days

C: Product not kept in stock. Typically Product requires longer lead time before shipping



CORRAL HARDWARE
P HOOK

PART NUMBER	SIZE	WITH 5/8" WASHER	PACKAGE QUANTITY (BAG/DRUM)	FINISH
F20143CH ^C	9/16 X 10 1/4"	X	50/500	PLAIN FINISH
F20143CH-P ^C	9/16 X 10 1/4"	X	50/500	ZINC PLATED
F20143CH-PIM ^A	9/16 X 10 1/4" - IMPORT	X	50/BAG 3000/PALLET	
F20144CH-PIM ^A	1/2 X 10 1/4" - IMPORT	X	50/BAG 3750/PALLET	

A: In-Stock Item. Typically product ships next day

B: Product may require short lead time. Typically product ships within 3-5 business days

C: Product not kept in stock. Typically Product requires longer lead time before shipping



P Hooks can be installed After manufacturing of gate. They make for easy replacement/installation on sales lot or at the farm.



BRACES



MID-PARK
METAL FORMING

WIDE BEND Z-BRACES

CAPABILITIES FROM 21 GAUGE TO 16 GAUGE HEMMED AND UNHEMMED Z-BRACES!!!

16 GAUGE - 0.062 MINIMUM GAUGE THICKNESS

18 GAUGE - 0.044 MINIMUM GAUGE THICKNESS

21 GAUGE - 0.032 MINIMUM GAUGE THICKNESS

CUSTOM LENGTHS AND HOLE PATTERNS ARE AVAILABLE

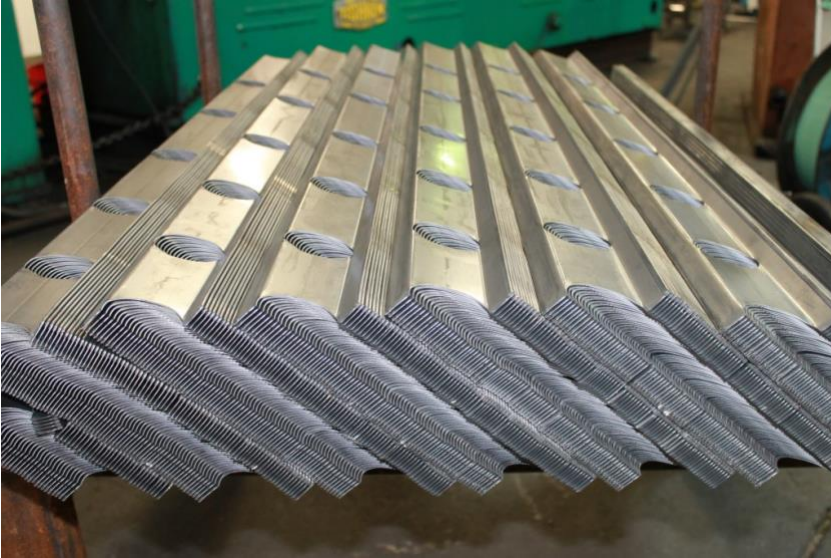
PART NUMBER	GAUGE	BAR QTY	BAR SIZE	LENGTH	PACKAGE QUANTITIES	FINISH
ZB21GAX6BRWB ^C	21	6	1.75"	47.5"	1000	PLAIN
ZB21GAX7BRWB ^C	21	7	1.75"	47.5"	1000	

A: In-Stock Item. Typically product ships next day

B: Product may require short lead time. Typically product ships within 3-5 business days

C: Product not kept in stock. Typically Product requires longer lead time before shipping

Z-BRACES



PLAIN FINISH Z-BRACES

PART NUMBER	GAUGE	BAR QTY	BAR SIZE	LENGTH	PACKAGE QUANTITIES	FINISH
ZB21GAX5BR ^A	21	5	1.75"	47.5"	1000	PLAIN FINISH
ZB21GAX6BR ^A	21	6	1.75"	47.5"	1000	
ZB21GAX6BR 2" ^A	21	6	2"	47.5"	1000	
ZB21GAX7BR ^A	21	7	1.75"	47.5"	1000	
ZB18GAX6BR ^A	18	6	1.75"	47.5"	1000	
ZB18GAX6BR 2" ^A	18	6	2"	47.5"	1000	
ZB18GAX7BR ^A	18	7	1.75"	47.5"	1000	
ZB18GAX7BR-EX ^A	18	7	1.75"	59"	1000	
F20000ZB (HOG) ^A	12	7	1.75"	33"	100	

A: In-Stock Item. Typically product ships next day

B: Product may require short lead time. Typically product ships within 3-5 business days

C: Product not kept in stock. Typically Product requires longer lead time before shipping

GALVANIZED Z-BRACES

PART NUMBER	GAUGE	BAR QTY	BAR SIZE	LENGTH	PACKAGE QUANTITIES	FINISH
ZB21GAX5BRGALV ^B	21	5	1.75"	47.5"	1000	GALVANIZED
ZB21GAX6BRGALV ^A	21	6	1.75"	47.5"	1000	
ZB21GAX6BRGALV 2" ^A	21	6	2"	47.5"	1000	
ZB21GAX7BRGALV ^A	21	7	1.75"	47.5"	1000	
ZB21GAX7BRGALV 2" ^A	21	7	2"	47.5"	1000	
ZB21GAX7BR-EXGALV 2" ^B	21	7	2"	58.5"	1000	
ZB18GAX6BRGALV ^A	18	6	1.75"	47.5"	1000	
ZB18GAX6BRGALV 2" ^A	18	6	2"	47.5"	1000	
ZB18GAX7BRGALV ^A	18	7	1.75"	47.5"	1000	
ZB18GAX7BRGALV 2" ^A	18	7	2"	47.5"	1000	
ZB18GAX7BR-EX GALV ^B	18	7	1.75"	59"	1000	
ZB18GAX7BR-EX GALV 2" ^B	18	7	2"	59"	1000	
ZB18GAX8BRGALV ^B	18	8	1.75"	59"	1000	
F20000ZB-G (HOG) ^A	12	7	1.75"	33"	100	

A: In-Stock Item. Typically product ships next day

B: Product may require short lead time. Typically product ships within 3-5 business days

C: Product not kept in stock. Typically Product requires longer lead time before shipping

HEMMED HAT BRACES

PART NUMBER	DESCRIPTION	QUANTITY
*HB16GAX51-75 ^C	16 GA HEMMED HAT BRACE	1500
*HB18GAX49.34 ^C	18GA G 90 HEMMED HAT BRACE	1500
*HB18GAX45.34 ^C	18 GA G90 HEMMED HAT BRACE	1500
*HB18GAX48 ^C	18 GA G90 HEMMED HAT BRACE	1500
*HB21GAX48GALV ^C	21GA G40 HEMMED HAT BRACE	1500

A: In-Stock Item. Typically product ships next day

B: Product may require short lead time. Typically product ships within 3-5 business days

C: Product not kept in stock. Typically Product requires longer lead time before shipping

*Not available for sale in Texas



ROUND BALE FEEDER PARTS



ROUND BALE FEEDER PARTS

FLAT BAR

PART NUMBER	SIZE	DIMENSION	PACKAGE QUANTITY (BAG/DRUM)	FINISH
F20000FB ^A	7 GA	1 1/2 X 17 1/2"	25/750	PLAIN FINISH
F20003FB ^C	1/4	1 1/2 X 20 1/2"	25/750	
F20008FB ^C	1/4	1 1/2 X 16"	25/750	
F20009FB ^C	16 GA	3 X 17 1/2"	25/750	
F20011FB ^C	10 GA	1 1/2 X 9"	50/1500	
F20012FB ^A	9 GA	1 X 17 3/4"	25/1000	
F20013FB ^C	11 GA	1 1/2 X 16 3/4"	25/1000	
F20025FB ^C	9 GA	1 X 33"	500/DRUM	
F20026FB ^C	9 GA	1 X 34 1/2"	500/DRUM	
F20000FB-P ^A	7 GA	1 1/2 X 17 1/2"	25/750	
F200010FB-P ^C	7 GA	1 1/2 X 25 1/2"	500/DRUM	
F20012FB-P ^A	9 GA	1 X 17 3/4"	25/1000	

A: In-Stock Item. Typically product ships next day

B: Product may require short lead time. Typically product ships within 3-5 business days

C: Product not kept in stock. Typically Product requires longer lead time before shipping



ROUND BALE FEEDER PARTS
HAY FEEDER BRACKET

PART NUMBER	GA	SIZE	HOLE QUANTITY	PACKAGE QUANTITY	FINISH
F20019HB ^A	12	44 11/16 X 2"	3	1000	PLAIN FINISH
F20020HB ^C	12	44 11/16 X 2"	2	1000	
F20024HB ^C	12	54 1/2 X 2"	3	1000	
F20027HB ^A	12	45 1/4 X 1 3/4"	3	1000	
F20039HB ^A	12	19 1/2 X 2"	2	750	
F20040HB ^C	12	20 1/2 X 2"	2	500	
F20054HB ^C	12	19 7/8 X 2 1/8"	2	1000	
F20037HB ^C	12	27 1/2 X 2"	2	500	ZINC PLATED
F20038HB ^A	12	19 1/2 X 2"	2	750	
F20049HB ^A	12	44 1/2 X 1 3/4"	2	1000	
F20050HB ^C	12	44 11/16 X 2"	2	1000	
F20053HB ^A	12	44 11/16 X 2"	3	1000	
F20056HB ^A	12	36 3/8 X 1 3/4 "	0	500	
F20060HB ^C	12	75 X 2"	0	500	GALVANIZED
F20023HB-G ^C	10	46 X 1 1/2"	3	1000	
F20024HB-G ^C	10	20 X 1 1/2"	2	2000	
F20040HB-G ^C	12	20 1/2 X 2"	2	1000	

A: In-Stock Item. Typically product ships next day

B: Product may require short lead time. Typically product ships within 3-5 business days

C: Product not kept in stock. Typically Product requires longer lead time before shipping



ROUND BALE FEEDER PARTS

HAY SAVER BAND

PART NUMBER	GA	SIZE	MATERIAL	PACKAGE QUANTITY
F20000HS ^C	24	17 1/2 X 96"	Cold Roll	250
F20001HS ^C	24	17 1/2 X 105 1/2"	Cold Roll	250

A: In-Stock Item. Typically product ships next day

B: Product may require short lead time. Typically product ships within 3-5 business days

C: Product not kept in stock. Typically Product requires longer lead time before shipping



MISC HARDWARE



MID-PARK
METAL FORMING

MISCELLANEOUS HARDWARE

CONNECTING BAND

PART NUMBER	SIZE	PACKAGE QTY (BAG/DRUM)	FINISH
F20240MI ^B	1 3/4" ROUND	100/2000	PLAIN FINISH
F25002MI ^C	1 3/8" SQUARE (BOLT-ON)	100/2000	
F20240MI-P ^A	1 3/4" ROUND	100/2000	ZINC PLATED

A: In-Stock Item. Typically product ships next day

B: Product may require short lead time. Typically product ships within 3-5 business days

C: Product not kept in stock. Typically Product requires longer lead time before shipping



MISCELLANEOUS HARDWARE
EYELET HINGES

PART NUMBER	SIZE	PACKAGE QUANTITY (BAG/DRUM)	FINISH
F20115MI ^A	3/4	100/4000	PLAIN FINISH
F20116MI ^A	3/4 (MALE)	100/2000	
F20115MI-P ^A	3/4	100/4000	ZINC PLATED
F20116MI-P ^A	3/4 (MALE)	100/2000	


U-CONNECTOR

PART NUMBER	GAUGE	PACKAGE QUANTITY (BAG/DRUM)	FINISH
F20110MI ^A	7GA	100/2500	PLAIN FINISH
F20110MI-P ^A	7GA	100/2500	ZINC PLATED


U-ROD

PART NUMBER	SIZE	PACKAGE QUANTITY (BAG/DRUM)	FINISH
F20112MI ^A	5/8"	50/500	PLAIN FINISH
F20112MI-P ^A	5/8"	50/500	ZINC PLATED



A: In-Stock Item. Typically product ships next day

B: Product may require short lead time. Typically product ships within 3-5 business days

C: Product not kept in stock. Typically Product requires longer lead time before shipping

MISCELLANEOUS HARDWARE
V-ROD

PART NUMBER	SIZE	PACKAGE QUANTITY (BAG/DRUM)	FINISH
F20105MI ^A	5/8 X 5" x 6" UNARCO	50/500	PLAIN FINISH
F20106MI ^B	5/8 X 5 1/2 X 5 1/2	50/500	
F20100MI-PA	1/2 x 5" x 6"	50/500	ZINC PLATED
F20105MI-PA	5/8 x 5" x 6"	50/500	
F20106MI-PC	5/8X 5 1/2 X 5 1/2	50/500	

A: In-Stock Item. Typically product ships next day

B: Product may require short lead time. Typically product ships within 3-5 business days

C: Product not kept in stock. Typically Product requires longer lead time before shipping



CONTINUOUS FENCING

MOUNTING CLAMP

WITH OR WITHOUT HOLES

PART NUMBER	GA	SIZE	PACKAGE QUANTITY (BAG/DRUM)	FINISH
F20001MC ^C	9	1/2 X 1 1/4"	100/3000	PLAIN FINISH
F20000MC ^A	9	1 X 1 1/4"	100/2500	
F20014MI ^C	9	1 X 1 5/16"	100/2500	
F20004MI ^C	9	1 X 2"	100/2500	

A: In-Stock Item. Typically product ships next day

B: Product may require short lead time. Typically product ships within 3-5 business days

C: Product not kept in stock. Typically Product requires longer lead time before shipping



2-WAY LOCKABLE SLAM LATCH

Part Name: Two Way Latch.

Packaging: Comes with all you see here vacuumed packed in clear plastic.

This 2-way latch system is great for cutting cattle. It is especially great for working cattle with little or no help on the farm. These latches are easy to install and can fit any size gate. Try one of these latches today and see how it can help operations of any size.



SPRING LATCH ASSEMBLY

SPRING-LOADED PLUNGER

PART NUMBER	DESCRIPTION
F20122MI ^A	1" WITH 7/16" PULL RING
F20123MI ^A	1" WITH 3/4" PULL RING

A: In-Stock Item. Typically product ships next day

B: Product may require short lead time. Typically product ships within 3-5 business days

C: Product not kept in stock. Typically Product requires longer lead time before shipping



FRAME RECEIVER

PART NUMBER	SIZE	PACKAGE QUANTITY (BAG/DRUM)	FINISH
F20120MI ^A	1/4 X 4 X 8	25/250	PLAIN FINISH
F20121MI ^A	1/4 X 4 X 8 WITH 1/4" MOUNTING PLATE	25/150	
F20120MI-PA	1/4 X 4 X 8	25/250	ZINC PLATED
F20121MI-PA	1/4 X 4 X 8 WITH 1/4" MOUNTING PLATE	25/150	

A: In-Stock Item. Typically product ships next day

B: Product may require short lead time. Typically product ships within 3-5 business days

C: Product not kept in stock. Typically Product requires longer lead time before shipping



SPRING-LOADED SLAM LATCH

F20007MI ^C	SLAM LATCH FOR SWEEP TUB
-----------------------	--------------------------



A: In-Stock Item. Typically product ships next day

B: Product may require short lead time. Typically product ships within 3-5 business days

C: Product not kept in stock. Typically Product requires longer lead time before shipping

COLLARED HINGE

PART NUMBER	DESCRIPTION
COLLARED HINGE ^C	<i>3/4" X 14" X 10 THREAD</i>
F20610PN ^C	3/4" X 12" WITH 10" THREAD COMPONENT
F20150MI ^C	7GA PIN BRACE X 1 1/2" COMPONENT
F20151MI ^C	7GA PIN BRACE X 2" COMPONENT
F20175PH-PIM ^A	1 3/4" ASSEMBLED IMPORT ZINC PLATED
F20200PH-PIM ^A	2" ASSEMBLED IMPORT ZINC PLATED



2-PIECE HINGE

PART NUMBER	PART DESCRIPTION	PLATING COLOR
F20595PN-P ^A	2 PIECE CLAMP HINGE WITH 3/4" THREADED BOLT FOR 2" GATE	CLEAR ZINC
F20596PN-P ^A	2 PIECE CLAMP HINGE WITH 3/4" THREADED BOLT FOR 2" GATE	YELLOW ZINC

A: In-Stock Item. Typically product ships next day

B: Product may require short lead time. Typically product ships within 3-5 business days

C: Product not kept in stock. Typically Product requires longer lead time before shipping



BUNK LINER

PART NUMBER	DESCRIPTION	PALLET QUANTITY
F25005BL ^A	BUNK LINER 5' DROP IN	150
F25010BL ^A	BUNK LINER 10' DROP IN	150
F25045BL ^A	F5252 BULL MINERAL FEEDER (3 TRAY) W/ HARDWARE	40

A: In-Stock Item. Typically product ships next day

B: Product may require short lead time. Typically product ships within 3-5 business days

C: Product not kept in stock. Typically Product requires longer lead time before shipping



C-BRACKET

F20000CB ^C	1/4" X 1" X 5"	SPECIAL ORDER
-----------------------	----------------	---------------



L-BRACKET

F20000LB ^C	1/4"X2"X 4 5/8"	SPECIAL ORDER
-----------------------	-----------------	---------------



F20501MI ^A	7GAx1 1/2"x 2 1/2"	Quantity 100, 2000
-----------------------	--------------------	-----------------------



ROLLER CARRIER

F20000RC ^C	1/4"X 2"	SPECIAL ORDER
-----------------------	----------	---------------

- A:** In-Stock Item. Typically product ships next day
- B:** Product may require short lead time. Typically product ships within 3-5 business days
- C:** Product not kept in stock. Typically Product requires longer lead time before shipping



NOTE: Roller not included. Frame only.

SADDLE CLAMP

PART NUMBER	GA	SIZE	DRUM QUANTITY	FINISH
F20001SC-PA	10	1 3/8"	2000	ZINC PLATED
F20003SC-PA	10	1 5/8"	1500	
F20011SC-PA	7	1 3/4"	2000	
F20013SC-PA	7	2"	1250	
F20001SC ^B	10	1 3/8"	2000	PLAIN FINISH
F20003SC ^B	10	1 5/8"	1500	
F20011SC ^B	7	1 3/4"	2000	
F20013SC ^B	7	2"	1250	

A: In-Stock Item. Typically product ships next day

B: Product may require short lead time. Typically product ships within 3-5 business days

C: Product not kept in stock. Typically Product requires longer lead time before shipping



FASTENERS

CARRIAGE BOLT

PART NUMBER	SIZE	FINISH
F25025CB ^A	3/8" X 2"	PLAIN FINISH
F25030CB ^A	3/8" X 2 1/4"	
F25040CB ^A	3/8" X 2 1/2"	
F25020CB-P ^A	3/8" X 1 1/2"	ZINC PLATED
F25025CB-P ^A	3/8" X 2"	
F25030CB-P ^A	3/8" X 2 1/4"	
F25031CB-P ^A	3/8" X 3"	



HEX BOLT

PART NUMBER	SIZE	FINISH
F25001HB-P ^A	5/16-18 X 3/4"	ZINC PLATED
F25012HB-P ^A	5/8 X 1-1/2"	



FLANGE NUT

PART NUMBER	SIZE	FINISH
F25008NT-P ^A	5/16-18	ZINC PLATED
F25009NT-P ^A	3/8"	



A: In-Stock Item. Typically product ships next day

B: Product may require short lead time. Typically product ships within 3-5 business days

C: Product not kept in stock. Typically Product requires longer lead time before shipping

FASTENERS

HEX NUT

PART NUMBER	SIZE	FINISH
F25010NT ^A	3/8"	PLAIN FINISH
F25010NT-P ^A	3/8"	ZINC PLATED



JAM NUT

PART NUMBER	SIZE	FINISH
F25000JN ^A	5/8"	PLAIN FINISH
F25010JN ^A	3/4"	
F25000JN-P ^A	5/8"	ZINC PLATED
F25010JN-P ^A	3/4"	



WASHER

PART NUMBER	SIZE	FINISH
F25010WS ^A	5/8"	PLAIN FINISH
F25020WS ^A	3/4"	
F25010WS-P ^A	5/8"	ZINC PLATED
F25020WS-P ^A	3/4"	



HIGH WING NUT

PART NUMBER	SIZE	FINISH
F25011NT ^A	3/8-16 HIGH WING	ALUMINIZED



A: In-Stock Item. Typically product ships next day

B: Product may require short lead time. Typically product ships within 3-5 business days

C: Product not kept in stock. Typically Product requires longer lead time before shipping

JAMES COMPTON



James Compton has been with Mid-Park for over 30 years. James started in welding and manufacturing, progressing into shipping, truck driving, and warehousing. He has been in sales for the last 15+ years and is well-known in the industry. Gate manufacturers nationwide depend on James' knowledge.

Contact James

Office: 270.259.3152

Cell: 270.945.2758

jcompton@mid-park.com



Melissa Mudd has recently joined our sales team at Mid-Park. She brings an extensive manufacturing and sales knowledge from previous education and employment. Melissa also has a farming background and practical knowledge of our products. Expect to see and hear from Melissa as we continue to be the best supplier with the most complete product line in the industry.

MELISSA MUDD



Contact Melissa

Office: 270.259.3152

Cell: 270.589.9482

mmudd@mid-park.com

SALES TEAM